

## **Historic, archived document**

Do not assume content reflects current scientific knowledge, policies, or practices.



MAY 18 1938  
U. S. Department of Agriculture.



# BUSH'S NURSERY

**GUY D. BUSH, 15th Ave. South and 40th Street**  
Take Bloomington Avenue Car to 40th Street  
**Minneapolis, Minn. Telephone Regent 1035**

## PLANT LIST and ORDER SHEET for 1938

Write after the name of the plant the number of dozens wanted. Hand order to cashier.

ANNUAL FLOWER PLANTS 10c Per Dozen		Number of Dozens Wanted	ANNUAL FLOWER PLANTS 20c Per Dozen		Number of Dozens Wanted	HARDY PERENNIAL FLOWER PLANTS 20c Each, \$2.00 Per Dozen		Number of Plants Wanted
Ageratum, Dwarf Blue.....	1	Aster, Aurora, Golden Sheaf.....	67	Bachelor's Button, Hardy, Blue.....	132			
Alyssum, White, Edging Plant.....	2	Aster, Queen of Market, Pink.....	68	Blue Flax.....	133			
Aster, Crego Giant, Mixed.....	3	Aster, Queen of Market, Red.....	69	Boltonia, Tall, Pink Daisy.....	134			
Aster, King, Mixed.....	4	Aster, Queen of Market, Purple.....	70	Canterbury Bell, Mixed.....	135			
Aster, Queen of Market, Mixed.....	5	Aster, Red Sensation.....	71	Columbine, Long Spurred, Scarlet.....	136			
Aster, Semple's, Mixed.....	6	Aster, Semple's, Lavender-blue.....	72	Columbine, Rocky Mountain, Blue.....	137			
Aster, All Varieties, Mixed.....	7	Aster, Semple's, Dark Rose.....	73	Coreopsis, Yellow Daisy.....	138			
Aster, Single, Daisy, Mixed.....	8	Aster, Semple's, Shell-pink.....	74	Delphinium, Chinese, Blue.....	139			
Baby Breath, White.....	9	Aster, Semple's, White.....	75	Delphinium, Belladonna, L. Blue.....	140			
Bachelor's Button, Double, Blue.....	10	Calendula, Sunshine, New.....	76	Delphinium, Bellamosum, Dark Blue.....	141			
Bachelor's Button, Double, Pink.....	11	Carnation, Chaubaud's Dbl. Red.....	77	Delphinium, DeLuxe, Dark Shades.....	142			
Bachelor's Button, Double, Red.....	12	Cosmos, Orange Flare.....	78	Delphinium, Hollyhock Strain.....	143			
Bachelor's Button, Double, Mixed.....	13	Cosmos, Early, Double Mixed.....	79	Gaillardia, Red Daisy.....	144			
Calendula, Orange King.....	14	Nasturtium, Dbl. Golden Gleam.....	80	Gaillardia, Burgundy, Red, New.....	145			
Calliopsis, Tall, Double.....	15	Nasturtium, Dbl. Scarlet Gleam.....	81	Gypsophila, Hardy Baby Breath.....	146			
Carnation, Double, Mixed.....	16	Nasturtium, Dbl. Glor. Gl. Mixed.....	82	Hardy Aster, Lady Dudley, D. Pink.....	147			
Chinese Forget-me-not, Blue Spikes.....	17	Pansy, Exhibition, Mixed.....	83	Hardy Aster, Victor, Lavender, Dw.....	148			
Cosmos, Early, Pink.....	18	Petunia, Balcony, Blue.....	84	Heliopsis, Double, Orange.....	149			
Cosmos, Early, Red.....	19	Petunia, Balcony, Blue Star.....	85	Liatris, Tall, Purple, Spikes.....	150			
Cosmos, Early, Mixed.....	20	Petunia, Balcony, Crimson.....	86	Lychnis, Pink Spikes.....	151			
Daisy, African, Blue-eyed.....	21	Petunia, Balcony, Rose.....	87	Lythrum, Roseum, Tall Spikes.....	152			
Daisy, African, Orange.....	22	Petunia, Balcony, White.....	88	Mullein Pink, Deep Pink.....	153			
Gaillardia, Double, Annual, Mixed.....	23	Petunia, Black Prince.....	89	Peach Bell, Tall, Blue Spikes.....	154			
Larkspur, Dark, Blue Spire.....	24	Petunia, Heavenly Blue.....	90	Pentstemon, Red Spikes.....	155			
Larkspur, Empress, Salmon-rose.....	25	Petunia, Rose Gem.....	91	Poppy, Iceland, Yellow Wonder.....	156			
Larkspur, Stockflowered, Mixed.....	26	Salvia, Harbinger, Red.....	92	Poppy, Iceland, Orange.....	157			
Lobelia, Dark Blue.....	27	Snapdragon, Giant, Crimson.....	93	Poppy, Oriental, Red.....	158			
Marigold, African, Double, Mixed.....	28	Snapdragon, Giant, Scarlet.....	94	Poppy, Oriental, Double, Red.....	159			
Marigold, French, Dwarf, Dbl. Mix.....	29	Snapdragon, Giant, Rose.....	95	Pyrethrum, Red.....	160			
Marigold, Little Brownie.....	30	Snapdragon, Giant, Mixed.....	96	Sidalcea, Rose-color Spikes.....	161			
Nasturtium, Dwarf, Mixed.....	31	Verbena, Mammoth, Pink.....	97	Sweet William, Newport Pink.....	162			
Nicotiana, Crimson.....	32	Verbena, Mammoth, Purple.....	98	Sweet William, Scarlet Beauty.....	163			
Nicotiana, White, Fragrant.....	33	Verbena, Mammoth, Red.....	99	Sweet William, Double, Mixed.....	164			
Nicotiana, Mixed.....	34							
Pansy, All Colors.....	35	<b>HARDY PERENNIAL FLOWER PLANTS</b> 10c Each, \$1.00 Per Dozen				<b>DWARF PERENNIAL PLANTS</b> Suitable for Rock Garden or Border 10c Each, \$1.00 Per Dozen		
Petunia, General Dodd, Crimson.....	36	Achillea, Dwarf, White.....	100	Ajuga, Blue.....	165			
Petunia, Howard's Star.....	37	Achillea, Rosy-red.....	101	Aubretia, Dwarf, Blue.....	166			
Petunia, Rose of Heaven.....	38	Bergamot, Scarlet.....	102	Buttercup, Dwarf, Double, Yellow.....	167			
Petunia, Rosy Morn.....	39	Blue Flax.....	103	Columbine, Alpine, Purple.....	168			
Petunia, Snowball, Dwarf White.....	40	Canterbury Bell, Mixed.....	104	Creeping Jenny, Yellow.....	169			
Petunia, Striped and Blotched.....	41	Clove Pinks, Mixed.....	105	Iris, Dwarf, Blue.....	170			
Petunia, Violet Queen.....	42	Columbine, Long Spurred, Mixed.....	106	Phlox, Subulata, Lavender.....	171			
Petunia, Balcony, Mixed.....	43	Coreopsis, Yellow Daisy.....	107	Phlox, Amoena, Dwarf, Rose-pink.....	172			
Petunia, All Colors, Mixed.....	44	Delphinium, Chinese, Blue.....	108	Pinks, Granaticus, Rose-pink.....	173			
Phlox, Salmon-pink.....	45	Delphinium, Mixed.....	109	Primrose, Evening, Yellow.....	174			
Phlox, Red.....	46	Forget-me-not, Pink.....	110	Prunella, Purple.....	175			
Phlox, Mixed.....	47	Forget-me-not, Everblooming.....	111	Sedum, Acre, Golden Moss.....	176			
Pinks, Double, Mixed.....	48	Gaillardia, Red Daisy.....	112	Sedum, Album, White.....	177			
Scabiosa, Crimson.....	49	Gypsophila, Hardy Baby Breath.....	113	Sedum, Coccinium, Rosy-red.....	178			
Scabiosa, Maroon.....	50	Hare-bell, Blue.....	114	Sedum, Sarmentosum, Yellow.....	179			
Scabiosa, Mixed.....	51	Hare-bell, White.....	115	Silene, Alpestris, White.....	180			
Snapdragon, Giant, Mixed.....	52	Hollyhock, Double, Mixed.....	116	Snow in Summer, White.....	181			
Stocks, Large Flowering, Purple.....	53	Marguerite, White Daisy.....	117	Thyme, Purple.....	182			
Stocks, Large Flowering, Red.....	54	Marguerite, Yellow Daisy.....	118	Thyme, Woolly-leaf.....	183			
Stocks, Large Flowering, Mixed.....	55	Michaelmas Daisy, Mixed.....	119	Veronica, Dwarf, Blue.....	184			
Tagetes, Sweet Scented, Yellow.....	56	Polemonium, Dwarf, Blue.....	120	Veronica, Dwarf, Pink.....	185			
Verbena, Mammoth, Mixed.....	57	Physostegia, Vivid-pink.....	121	Veronica, Dwarf, White.....	186			
Zinnia, Giant, Salmon-rose.....	58	Poppy, Iceland, Mixed.....	122	Veronica, Semi-dwarf, Blue.....	187			
Zinnia, Giant, Scarlet.....	59	Poppy, Oriental, Red.....	123					
Zinnia, Giant, Yellow.....	60	Pyrethrum, Daisy, Mixed.....	124					
Zinnia, Giant, Mixed.....	61	Pyrethrum, Giant White Daisy.....	125					
Zinnia, Giant, Dahlia-flowered, Mixed.....	62	Rudbeckia, Purple Cone-flower.....	126					
Zinnia, Dwarf, Red Riding Hood.....	63	Scabiosa, Hardy, Lavender.....	127					
Zinnia, Dwarf, Pompon, Salmon.....	64	Shasta Daisy, White.....	128					
Zinnia, Dwarf, Pompon, Yellow.....	65	Statice, Sea Lavender.....	129					
Zinnia, Dwarf, Pompon, Mixed.....	66	Sweet William, Mixed.....	130					
		Veronica, Blue Spikes.....	131					

Large Flowering, Fringed and Double Petunias, Miscellaneous Annuals, Iris, Lilies, Peonies, Annual Vines, Vegetable Plants, Trees, Evergreens, Grass Seed and Fertilizer. See inside pages.  
If interested in Shrubs and Roses, ask for price list.

LARGE FLOWERING PETUNIAS		Number of Dozens Wanted
	DOZ.	
Petunia, Dwarf California, Giant, Romona, Mixed	35c	188
Petunia, Elk's Pride, Large, Velvety-Violet	35c	189
Petunia, Giant, Ruffled, Fringed, Mixed	35c	190
Petunia, Martha Washington, Dwarf, Fringed, Rose-pink	35c	191
Petunia, Romany Lass, Large, Fringed, Red	35c	192
Petunia, Large, Fringed, Scarlet Beauty	35c	193
Petunia, Setting Sun, Large, Fringed, Rose-pink	35c	194
Petunia, Superb, Single, Fringed, Deep Throated, Brilliant	35c	195
Petunia, Theodosia, Large, Fr., Rosy-pink, Gold Center	35c	196
Petunia, Violaeca, Velvety, Fr., Large, Purple Flowers	35c	197
Petunia, Double Fr. Rose-Queen, Extra Large Flowers	50c	198
Petunia, All Double, Dwarf, Large Fl. Victorious, Mixed	50c	199

VEGETABLE PLANTS		
20c Per Dozen		
Tomato, Bonny Best	200	
Tomato, Earliana	201	
Tomato, John Baer	202	
Tomato, Ox Heart	203	
Tomato, Ponderosa, Red	204	
Tomato, Ponderosa, Yellow	205	
Tomato, Yellow Plum	206	
Cauliflower, Snowball	207	

VEGETABLE PLANTS		
10c Per Dozen		
Tomato, Large Red	208	
Pepper, Bell, Sweet	209	
Cabbage, Copenhagen Market	210	
Cabbage, Danish Ballhead	211	
Parsley, Moss Curled	212	

IRIS		EACH	Number of Plants Wanted
Florentina, White	20c		
Gertrude, All Blue	20c		
Madam Chereau, Light Blue	20c		
Lent A. Williamson, Purple	25c		
Margaret, White, Shaded L. Blue	20c		
Princess Louise, Yellow and Plum	20c		
Prosper Laugier, Bronze and Purple	20c		
Quaker Lady, Lavender and Blue	20c		
Queen Caterina, Light Blue	20c		
Rheine Nixe, Purple and White	20c		
Iris, German, Purple	20c		
Iris, German, Mixed Shades	10c		
Siberian, Light Blue	10c		
Siberian, Purple	10c		
Siberian, Striped	10c		
Siberian, White	15c		

LILIES—HARDY		EACH	Number of Dozens Wanted
Lily, Elegans, Red	25c		
Lily, Funkia, Lavender	20c		
Lily, Lemon, Lemon-yellow	25c		
Lily, Orange	25c		
Lily, Regal, Large, White	20c		
Lily, Rubrum, Rosy-white and Red	35c		
Lily, Tenufolium, Bright Red	10c		
Lily, Tiger, Double	15c		
Lily, Yucca, White Sword Lily	20c		

PANSY PLANTS		
One-year-old Pansy Plants of many varieties and shades.		
Pansy, Mixed, dozen	25c	
Large size plants, six for	25c	

PEONIES, DOUBLE FLOWERING		Number of Plants Wanted
Alexander Dumas, Late Pink	45c	
Edulis Superba, Early Deep Pink	35c	
Felix Crousse, Midseason Red	50c	
Festiva Maxima, Early White	45c	
Karl Rosenfield, Mid. Dark Red	50c	
Louis Van Houtte, Late Crimson	35c	
Mons Jules Elie, Early Lilac Pink	50c	
Rachel, Midseason Red	35c	
Rose Fragrance, Mid. Deep Rose	35c	
Peony, Mixed Varieties	10c	

GIANT PLANTS		
Extra Choice, \$3.50 Per Dozen		
	EACH	
Blue Flax	35c	
Coreopsis, Yellow Daisy	35c	
Gaillardia, Red Daisy	35c	
Hare Bell, Blue	35c	
Lychnis, Pink Spikes	35c	
Lythrum, Roseum, Tall Spikes	35c	
Mullein Pink, Deep Pink	35c	
Perennial Bachelor's Button, Blue	35c	
Pinks, Hardy Mixed	35c	
Saxifrage, Cordifolia, Deep Pink	35c	
Shasta Daisy, White	35c	
Statice, Lavender	35c	

**GIANT PLANTS GIVEN FREE**  
Any one of above Giant Plants Given Free with a \$3.00 order; 2 plants with \$5.00 order; 5 with \$10.00 order.

DWARF ANNUAL FLOWER PLANTS		
Suitable for Rock Gardens and Borders		
Well developed plants, 5c each.		
Ageratum, Blue Cap, 5 inches. Very compact.		
Alyssum, Little Gem, Carpet of Snow, White flowers, 4 inches.		
Brachycome, Swan River Daisy, compact plants 8 to 10 inches, small flowers of blue, white, purple, etc.		
Cockscomb, Dwarf varieties in red, orange, yellow, etc.		
Leptosiphon, Dainty flowers of many shades of orange, pink, yellow, etc. About 3 inches high.		
Lobelia, Tennior, Dark Blue, white center, trailing.		
Nemesia, Compact plants, covered with attractive red, blue and orange flowers, 8 inches.		
Sanvitalia, Trailing Zinnia, Small double, yellow daisy, with black center, 6 inches.		
Tagetes, Sweet Scented Marigold, Compact plants with small yellow flowers, 10 inches.		
Viscaria Oculata, Flowers of red, blue, pink, white, etc. 1 foot.		

MISCELLANEOUS ANNUALS		Number of Dozens Wanted
Bachelor's Button, Black Boy, doz.	20c	
Cacalia, Tassel Flower, doz.	10c	
Calendula, Apricot Queen, doz.	20c	
Calendula, Shaggy Orange, doz.	20c	
Cosmos, Sensation, Early, doz.	30c	
Four o'Clock, Mixed, doz.	20c	
Marigold, Collarette, New, doz.	30c	
Marigold, Gigantea, Sunset, New, doz.	30c	
Marigold, Mexican, Orange, doz.	20c	
Marigold, Yellow Supreme, doz.	20c	
Marigold, Harmony, D. French, New, doz.	20c	

Moss Rose, Mixed, doz.	10c
Phlox, Gigantea, Art Shades, doz.	20c
Scabiosa, Blue Cockade, doz.	20c
Sweet Sultan, Yellow, doz.	10c
Zinnia, Fantasy, Mix. doz.	20c
Viola, Cornata, Mixed, doz.	20c

ANNUAL VINES		
Cardinal Climber, Red, 2 for	5c	
Cobea Scandens, Purple, 2 for	5c	
Moonflower, Heavenly Blue, each	5c	
Scarlet Runner Bean, 2 for	5c	
Thunbergia, Black-eyed Susan, 2 for	5c	

EVERGREENS		Number of Trees Wanted
Balled and Burlapped		
<b>Juniper, Red Cedar</b>		
2 to 2½ ft.	\$1.50 to \$2.00	
15 to 18 in.	.75 to 1.00	
<b>Juniper, Silver Cedar</b>		
2 to 2½ ft.	2.50 to 3.00	
18 to 24 in.	1.50 to 2.00	
<b>Juniper, Saven, Spreading</b>		
18 to 24 in.	3.50 to 4.00	
15 to 18 in.	2.25 to 2.75	
12 to 15 in.	1.25 to 1.75	
<b>Juniper, Pfitzer, Low Spreading</b>		
15 to 18 in.	2.25 to 2.75	
12 to 15 in.	1.25 to 1.75	
<b>Pine, Austrian</b>		
3 to 4 ft.	3.50 to 4.00	
2 to 2½ ft.	1.50 to 2.00	
<b>Pine, Ponderosa</b>		
2 to 2½ ft.	1.50 to 2.00	
<b>Pine, Mugho, Dwarf</b>		
2½ to 3 ft.	3.00 to 4.00	
18 by 18 in. spread	2.50 to 2.75	
15 by 15 in. spread	1.50 to 2.00	
<b>Pine, Scotch</b>		
3 to 4 ft.	2.00 to 3.00	
2 to 2½ ft.	1.00 to 1.50	
<b>Spruce, Colorado, Blue</b>		
18 to 24 in.	2.50 to 3.50	
15 to 18 in.	1.50 to 2.00	
Green 3½ to 4 ft.	3.50 to 4.00	
18 to 24 in.	1.50 to 2.00	
12 to 15 in.	1.00 to 1.25	
<b>Spruce, Black Hills, Compact</b>		
2 to 2½ ft.	2.00 to 2.75	
18 to 24 in.	1.50 to 2.00	

Evergreens are becoming more popular each year. They are beginning to crowd out the old plantings of shrubbery which have monopolized the home grounds for so long.

The first cost of evergreens is low compared to their increasing value year after year, and the value they add to the home property.

Properly grown, carefully dug and handled, they are as easy to transplant and make grow as any other plant.

Full directions for planting and care of evergreens will be given at time of purchase.

**Hardy Shrubs and Roses** not listed here. If interested ask for list.

POTTED FLOWER PLANTS	
Geraniums, Daisies, Cannas, Petunias, Fuchsias, Begonias, Lobelia and other plants suitable for window boxes or bedding out.	

Gladiolus, Mixed, Exhibition Varieties, also separate named varieties.

SMALL EVERGREENS		Number of Trees Wanted
Suitable for Rock Garden		
Arbor Vitae, Globe Shape		
12 to 15 in.....	\$ .75 to \$1.25	
Arbor Vitae, Pyramid		
15 to 18 in.....	.75 to 1.00	
12 to 15 in.....	.50 to .75	
10 to 12 in.....	.35 to .50	
Juniper, Savens		
8 to 10 in.....	.50 to .75	
Juniper, Silver, Creeping		
8 to 10 in.....	.25 to .35	
10 to 12 in.....	.35 to .50	
Juniper, Silver, Pyramid Shape		
10 to 12 in.....	.50 to .75	
12 to 15 in.....	.75 to 1.25	
Juniper, Red Cedar		
12 to 15 in.....	.50 to .75	
Pine, Mugho, Dwarf		
4 to 6 in.....	.15 to .25	
10 to 12 in.....	.50 to 1.00	
Spruce, Colorado, Green		
10 to 12 in.....	.35 to .60	
12 to 15 in.....	.75 to 1.00	
Spruce, Black Hill		
10 to 12 in.....	.35 to .75	
15 to 18 in.....	.75 to 1.00	
Spruce, White		
10 to 12 in.....	.25 to .35	

When planting in a rock garden, use some of the tall growing varieties for background, such as the American and Pyramid Arbor Vitae, Austrian and Scotch Pine, Norway Spruce and Canadian Hemlock.

The Junipers and Arbor Vitae can be trimmed to prevent spreading or growing too tall.

### PERENNIALS IN BLOOM

Don't forget to visit the nursery during the month of June when thousands of perennials are in bloom, and in July and August when many varieties of Hardy Phlox are in bloom. A good display will be on hand each day from which to select.

### ANNUALS IN BLOOM

Many annuals are in bloom at the nursery during the summer months. If your garden is not complete, you can get Petunias, Verbenas, Bachelor's Buttons, Pinks, Marigolds, Lobelias, Snapdragons, Zinnias, etc., all in bloom, just what you need to fill up that vacant space in the garden.

The nursery is open every day all summer. The summer planting of flowers is increasing each year. The plants should be planted in late afternoon or evening for best results. Water the ground before planting and again afterwards. Press earth firmly around roots.

Perennials should be protected in winter with a covering of three or four inches of straw. Cover in the fall when the ground starts to freeze.

Bouquets of summer flowers,  
25c to \$1.00

SHADE TREES		Number of Trees Wanted
Catalpa, 4 to 5 ft.....	\$ .50 to \$ .75	
Chestnut, American Buckeye		
Yellowish Flowers, 6 ft.	1.50 to 1.75	
Elm, American, for lawn		
5 to 6 ft.....	.35 to .60	
7 to 8 ft.....	.75 to 1.00	
8 to 10 ft.....	1.00 to 1.50	
Elm, American, for boulevard		
10 to 12 ft.....	2.00 to 3.00	
Elm, Chinese, Dense Foliage		
Fast Growing, 4 to 5 ft.	.35 to .50	
5 to 6 ft.....	.50 to .75	
7 to 8 ft.....	1.25 to 1.75	
12 to 15 ft.....	3.50 to 4.00	
Maple, Red Leaf		
8 to 10 ft.....	3.00	
Maple, Soft or Silver		
12 to 15 ft.....	1.75	
15 to 18 ft.....	2.50 to 3.00	
Maple, Ginnala, Dwarf, Red Tip Leaves		
5 to 6 ft.....	1.50 to 2.00	
Poplar, Lombardy, Pyramid Type		
3½ to 4 ft.....	.25 to .35	
4 to 5 ft.....	.35 to .50	
5 to 6 ft.....	.50 to .75	
6 to 8 ft.....	.75 to 1.00	
8 to 10 ft.....	1.50 to 1.75	
Poplar, Simon, Pyramid Type		
3½ to 4 ft.....	.35	
Poplar, Norway, Fast Growing		
8 to 10 ft.....	.75 to 1.00	
Willow, Niobe, Weeping		
3 to 4 ft.....	.25 to .35	
4 to 5 ft.....	.35 to .50	
5 to 6 ft.....	.50 to .75	
6 to 8 ft.....	1.00 to 1.25	

When planting a shade tree cut back top branches one-half. Dig the hole deep and fill with water which should be allowed to settle. Set tree deep and tamp hard with foot. After tree is planted water again. Then water about twice a week for a month if in sandy soil. Less watering is required in heavy soil. Some varieties of trees will drown if watered too much.

### BLACK DIRT

Our black dirt is nearly all humus. Humus is decayed vegetation and decayed vegetation is nature's fertilizer. It produces a good growth of new vegetation wherever used, in flower pots, window boxes, flower beds, gardens or lawns.

Two-yard truck load.....\$4.00

Sack ..... 25c

Dirt properly mixed with humus and fertilizer for use in window boxes.

Sack ..... 50c

LAWN GRASS SEED	
Crystal Lawn Seed, best mixture of Clover, Red Top and Kentucky Bluegrass, lb. ....	40c
Falcon Lawn Seed, a mixture of Clover, Red Top, Bluegrass and Russian Rye, lb. ....	35c
Shady Lawn Seed, good mixture, lb. ....	45c
White Clover, lb. ....	60c

One pound will plant a square space of about 15 feet wide, or 225 square feet.

### FERTILIZER

Steamed Bone Meal, 3 lbs.....	20c
10 lbs.....	50c
20 lbs.....	90c
Wizard Sheep Manure, 3 lbs.....	20c
10 lbs.....	45c
20 lbs.....	85c
Vigoro, 1-lb. pkg.....	10c
5-lb. pkg.....	45c
10-lb. pkg.....	85c
25-lb. bag.....	\$1.50
50-lb. bag.....	2.50
100-lb. bag.....	4.00

Vigoro is a highly concentrated fertilizer. It acts quickly and should be used in starting small plants. Spread on a coating of about 1 lb. to 3 or 4 square yards, and mix in the soil to a depth of 3 or 4 inches before setting in plants. Use it in connection with our Humus soil to start a more rapid growth.

### PLANTS SHIPPED BY PARCEL POST

We do not fill mail orders for less than \$1.00. Add 25c extra for postage and packing on \$1.00 order and 10c extra for each additional \$1.00.

This sheet will be returned with your order.

Name .....

Address .....



*One of many views at the Nursery*

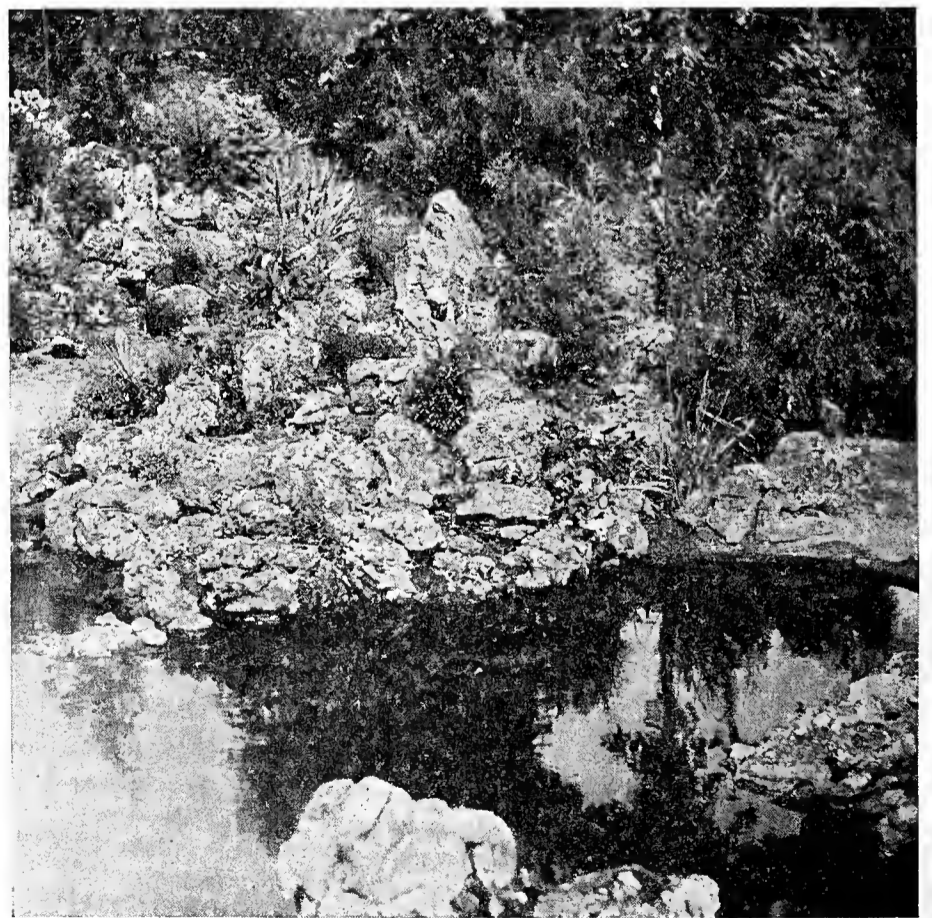
#### **ROCK GARDENING AS A PASTIME**

If you must have a hobby, try your hand at rock gardening. There is always something in nature that appeals to everyone. A rock garden built to represent nature is most fascinating. There is something in a well-built rock garden to interest everyone, the plants and flowers, the rocks, the water, water plants and fish, or the effect of the entire arrangement of the pool and the garden. Hills and valleys, streams and waterfalls representing in miniature what we have seen in nature make a grand display.

One might travel for days, and not find a spot so interesting as a carefully built rock garden on his own home grounds.



*Rock Garden view at Nursery*



*View of Rock Garden and Pool*